

Updated Burchfield's Salem Leads to New Walking Tour

Homestead visitors have long enjoyed seeing Burchfield's Salem, a map of Burchfield's painting sites in the Salem area. Originally developed as a *Salem News* insert in 1987 by Burchfield Homestead Society (BHS) Founding Director Richard "Dick" Wootten, the maps were updated and published again in 1993 for Burchfield's centennial birthday celebration.

Recently, Irene Barns, a BHS volunteer and web host, updated the black and white brochure, which had gotten hazy with repeated photocopying, and inspired a new project in the process.

Barns' version of Burchfield's Salem is a sharp bi-fold with crisp color thumbnail photos of 31 paintings numbered to correspond with their mapped locations. The brochure is available for free download on our website.

BHS's new Burchfield's Footsteps project takes the info a step further with an actual walking tour of eight Downtown Salem painting sites that inspired Burchfield paintings.

QR-code-embedded stickers will be placed in windows of selected locations. When walkers scan the codes with their smart phones, they will be taken to a web page where they can see the painting and compare it to the current view of the area. The window stickers are designed by Kris Danklef, a Salem graphic artist

The walking tour will be inaugurated during the celebration of Burchfield's birthday on April 8 as part of Salem Second Saturday that starts at 10 a.m. Downtown. At 1 p.m. refreshments will be served at the Homestead, and a Burchfield-inspired craft project will be offered.

Barns, a Salem native who worked in advertising before leading her own commercial exhibit company, created thumbnails of the Burchfield's Salem paintings for the BHS website. Each thumbnail photo is linked to a page on the site with details about each work of art and relevant journal excerpts plus a link to an enlarged version on the Burchfield Penney Art Center archive.

Barns and her husband Jim returned to Salem when they retired. In 2017 she reconnected with Janis Yereb, her high school art teacher who was then serving as the homestead curator, when she noticed the house museum during a Sunday walk. Yereb gave her a tour and Barns, who had visited many renowned museums in the U.S. and Europe, was impressed.

"I just love most of Burchfield's art," Barns said, adding that she "was just knocked out by his conventions of abstract thoughts and his ability 'to paint' the sounds of insects." As a volunteer Barns has created the BHS website, maintains it and updates its content, and uses her talents to bring Burchfield art to new audiences.

Burchfield's Salem



By Dick Wootten

In 1921, artist Charles Burchfield, a 28 year old graduate of the Cleveland school of arts who had exhibited his watercolors in New York City the year before decided that several old buildings in downtown Salem were interesting enough to be subjects of a painting.

The following year he was married and the young couple moved to Buffalo NY where Charles designed wallpaper until 1929 when he and his family began living off the sale of his paintings.

In 1941, he returned to that early painting of Salem buildings and enlarged it, making it appear that the structures were on the edge of some vast space. Of course most of Burchfield's paintings carry with them a good dose of his creative imagination. It is fun to see in his art where the realism ended and the imagination began.

In Salem you can still see much of Burchfield's Salem by walking around town. Those buildings Burchfield painted are still here and so are the houses in his neighborhood on E 4th St. The forests and fields that he roamed still surround Salem.

With the Burchfield maps of Salem on the next three pages you can compare his painting sites with his paintings. Thirty one artworks are located on the maps.

Each painting has a number which corresponds to the circled number on the map. These circles attempt to show where Burchfield was standing when he painted his picture and the arrows show the direction in which he was looking. The maps were created by local artist Linda Sutter.

Charles Burchfield lived from 1893 till 1967 and lived in Salem from 1898 to 1921. In 1947 the Cleveland Plain Dealer referred to him as America's foremost artist.

His name is firmly established in the history of American art. And Salem, Ohio (a place that inspired him long after he left here) will continue to keep his memory alive.



"The Edge of Town" 1921 - 1941



Scene number 1 on map as it appears in 2023. Southwest corner of State Street and S. Broadway Avenue Salem, Ohio

Layout and some copy adapted from THE SALEM NEWS April 23, 1987



Preview the Burchfield's Footsteps walking tour by pointing your smartphone at this QR code. Join us at 1 pm April 8 to inaugurate the eight-site walking tour during Burchfield's birthday celebration at the Homestead. We thank the participating sites for hosting the stickers in their windows so visitors can glimpse the connections between Burchfield's art and the history of Downtown Salem.

Burchfield Homestead on Ohio Literary Trail

The Ohioana Library Association added the Burchfield Homestead to the Ohio Literary Trail in 2022. The trail map which is available at Ohioana.org, features significant Ohio authors' homes, libraries, and book festivals.

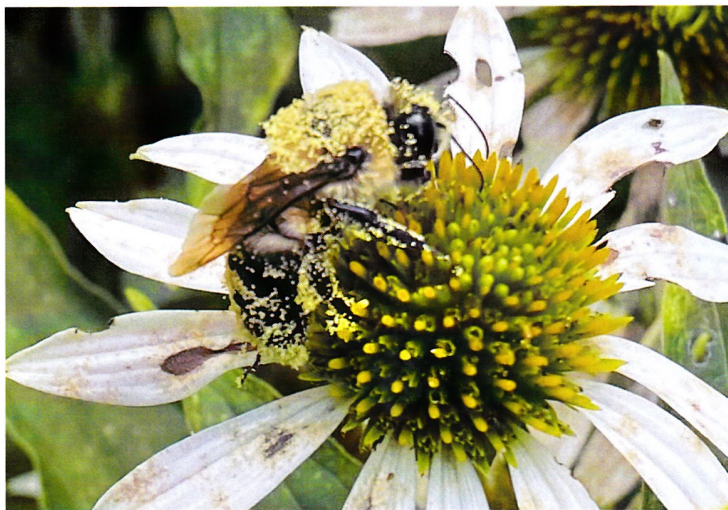
The Homestead's inclusion recognizes the importance of Charles Burchfield's journals. The artist's nearly daily entries fill 72 volumes, now housed at the Burchfield Penney Art Center, and have been published in books such as *Charles E. Burchfield Journals: Poetry of Place*.

EXTERIOR PAINTING COMPLETE

The 2022 season was full of grant-writing and grant supervision. With funding from the Ohio History Fund, the Pearce Foundation, and BHS donors, we were able to get all the exterior trim and siding of the house professionally scraped, sanded, caulked, and painted. The structure required a great deal of surface preparation, and the historical aspect of the property meant that the old wood required delicate hand work.

This was the first time we have undertaken a state-level grant competition, and we are very happy with the end result, as well as with the attention the process brought to our area. For more on the Ohio History Fund see ohiohistory.org/historyfund.

We also learned that procrastination never helps when it comes to house repairs. The BHS board plans to start a capital improvement fund so our next coat of paint can come before it is needed that badly! Our to-do list for this year includes repairing the rear porch roof and downspouts and replacing the basement window frames. Donations of money, time, or talent to these projects would be greatly appreciated.



GARDEN ABUZZ!

The Homestead garden is entering its third summer as a designated Pollinator Demonstration space. It continues to reverberate with the sound of bees and the sights of butterflies, and definitely meets Charlie's journal description of "mingled together in pleasing confusion."

We welcome garden visitors during daylight hours for photography, painting, or just relaxing. Please keep the garden gate closed and the alley clear while visiting. If you would like to arrange a group event, call and let us know how we can help. Phone 330-717-0092 at least three days in advance.

2022 TREES AND TRAINS SUCCESS

The Trees and Trains event in November 2022 attracted 100 attendees and brought in more than \$1,000 to support Homestead operating expenses. This is our biggest fundraiser of the year and is also important to our advertising efforts. We are already making plans for this November and welcome volunteers to help with the event. For more photos of this year's imaginative trees go to our website burchfieldhomestead.com.

Thanks to all these cooperating organizations and creative volunteers:

Art by Anissa DiLeo	InstaCopy Salem	Paul Kapusta
Beaver Creek	Salem Historical Society	Cheryl Mattevi
Wildlife Ed. Center	Salem Public Library	Ann Michelle
BeeCityUSA -	United Quilt Guild	McMaster
Salem	Denise Bryarly	Ron Roberts
Girl Scout Troop 80774	Ginger Grilli	Robert Viencek



PLEASE SUPPORT THE BURCHFIELD HOMESTEAD SOCIETY!

April marks the beginning of our fiscal year, when we request annual membership dues.

Your generous donation will help us reach our goal of restoring and preserving

Charles Burchfield's boyhood home. Please send your check and this form to

Burchfield Homestead Society, P.O. Box 317, Salem OH 44460

We are a 501(c)(3) organization.

.....Please circle.....

INDIVIDUAL MEMBERSHIP \$10 FAMILY MEMBERSHIP \$35 PATRON \$100 OTHER _____

Donor Name: _____

Address: _____

Volunteers of time and energy are always welcome!

Thank You

ANISSA DILEO FINDS INSPIRATION AT BHS & SPARKS CREATIVITY WITH POPUPS

BHS President Sara Baer (SB) recently talked with Anissa DiLeo (AD), an artist and BHS volunteer.

SB: Anissa, your creative energy is a breath of fresh air to the BHS. Could you tell us how you became interested in the arts and Charles E. Burchfield?

AD: I have a background in fine arts and culinary arts and love to teach in both of those areas! I've always been drawn to the outdoors and have been making nature/garden art for the past 20 years.

I discovered Charles Burchfield [Charlie and CEB] after volunteering in the BHS garden, [which I started] after reading an ad for volunteers in the *Salem News*. I grew to love the abundant native flowers that Cheryl Mattevi so meticulously cares for in honor of the original garden planted by Charlie and his mother, Alice, during his childhood in the home. As I spent more time at the Homestead I began to recognize those same flowers in the many Burchfield prints that hang inside the house.

SB: Artists still visit the house to find inspiration from the place that inspired Charlie over 100 years ago. Did you find inspiration for your own work?

AD: I'm often inspired by my surroundings at my home and at various pollinator gardens I volunteer at around Salem.

I use this inspiration to create mosaics, paintings, and chalk art of my own. I loved seeing the same views in my own life that CEB wrote of in his journals and then represented in his painting style. As I grow as an artist I aspire to one day capture similar intensities of emotions in my own work that he elicited in his paintings.



Anissa DiLeo, an artist and BHS volunteer, guided children in several BHS art projects at Salem's Art in the Park event in June 2022.

SB: Anissa, you brought your artistic and teaching talents to BHS through Art in the Park and PopUp art classes in 2022. What PopUps can we look forward to at BHS in 2023?

AD: The PopUps are a fun and easy way to spark interest in the arts. They create a cozy environment where people of all skill levels can pop in, learn, create and make new friends, all in a short time at the Homestead.

I truly believe that taking a couple hours as often as possible to garden and enjoy some art therapy is an excellent way to process emotions and release stress in the body.

These PopUps are special because they also provide a chance to understand more about CEB and dig deeper into his many

layered works and stylistic techniques. The proceeds of these PopUps help to preserve the Homestead and allow us to raise money for BHS and support other programming.

SB: Anissa thank you for sharing your time and talent with us. BHS is very happy to have you as a part of our team. Without skilled and passionate volunteers like you, Anissa, we would not be able to continue our mission to share Burchfield's childhood home and artistic legacy with fans new and old. We look forward to spending time with you at our scheduled PopUps this year at the Homestead.

VOLUNTEERS WELCOME

We would love to welcome you as a part of our volunteer crew. If you have an interest in gardening or art, or a special talent that you think would benefit BHS, please contact Curator Cheryl Mattevi at (330) 717-0092.

Here are some tasks that we need more volunteers to help do:

- greeting Homestead visitors on Sundays
- giving docent talks to groups
- researching and labeling painting reprints in our archive
- putting up and taking down displays
- assisting with maintaining the house, garden and lawn
- decorating trees for Trees and Trains event
- teaching crafts during BHS events
- cleaning, sweeping floor, dusting, washing windows
- assisting with craft events



Burchfield Homestead Society, Inc.
 PO Box 317
 Salem OH 44460

2023 BURCHFIELD HOMESTEAD SOCIETY CALENDAR

All events at the Burchfield Homestead, 867 E. 4th St., Salem, unless indicated otherwise.

**Homestead Open on Sundays 1 p.m. to 4 p.m.
 from May 1 through October**

To arrange a group tour or special appointment, phone 330-717-0092 at least three days in advance.
 Your generous donation will help preserve the Homestead for the future.



March 26 – 1 to 4 p.m., Art by Anissa DiLeo PopUp Art Workshop: Burchfield Mosaic

Up-cycle a textured naturescape by brushing bits of magazine pages, deco paper and glue to create your own Burchfield-style of work of art. \$10 donation suggested.

April 8 – 10 a.m. to 3 p.m., Salem Second Saturday Event to Celebrate Charles Burchfield Day with Special open hours at the Homestead

From 1 to 3 p.m. celebrate the City of Salem's birthday proclamation at the Burchfield Homestead. We will inaugurate our new walking tour: Burchfield's Footsteps. There will be refreshments and a children's art project.

April 16 – 2 p.m. to 4 p.m., Burchfield Homestead Society Annual Meeting

Join Burchfield Homestead Society members to start a new season with the annual meeting at the office of Attorney Frederic Naragon, 248 E. State St., Salem. New and long-time members are encouraged to attend to learn about this year's projects and vote on the slate of officers. Membership dues can be paid on site.

April 30 – 1 to 4 p.m., Art by Anissa DiLeo PopUp Journal Workshop: Pressed Flowers Galore!

Use up-cycled journals and natural pressed plants to create a personalized journal to record your thoughts and ideas as Charles Burchfield did throughout his life. Bonus extras include instructions in how to make flower bookmarks and journal covers. \$10 donation suggested.

May 21 – 1 to 4 p.m., Art by Anissa DiLeo PopUp Workshop: Burchfield Symbolism with Chalk and Charcoal

Create an original work of art using flowers from Burchfield's backyard garden, blending and masking techniques. Lesson will cover the symbolism in Charles Burchfield's paintings. \$10 donation suggested.

June 23 – 5 to 8 pm, Pollinator Garden Open House in collaboration with BeeCityUSA-Salem

Live music, refreshments, vendors, and pollinator education will highlight our garden to celebrate all those buzzing critters Burchfield included in his own views of his backyard.

June 24 – 10 a.m. to 2 p.m. Art in the Park at Waterworth Memorial Park

Burchfield Homestead volunteers will join Salem Library and Salem Parks and Recreation for this fun summer event with a children's craft activity.

August 12 – 10 a.m. to 3 p.m., Salem Second Saturday, pARTy!

Join us for extended hours at the Burchfield Homestead and a special children's art activity.

November 18 and 19 – 1 p.m. to 5 p.m., Trains and Trees

Visit the incredible model train layout at the office of Frederic Naragon, 248 E. State Street, Salem, and holiday trees inspired by Burchfield paintings at the Homestead. There will be further extended hours at the Burchfield Homestead only on November 26, December 2, 9, 16, and 23, 1 to 5 p.m. or by appointment at 330-717-0092. \$3 admission covers both venues.